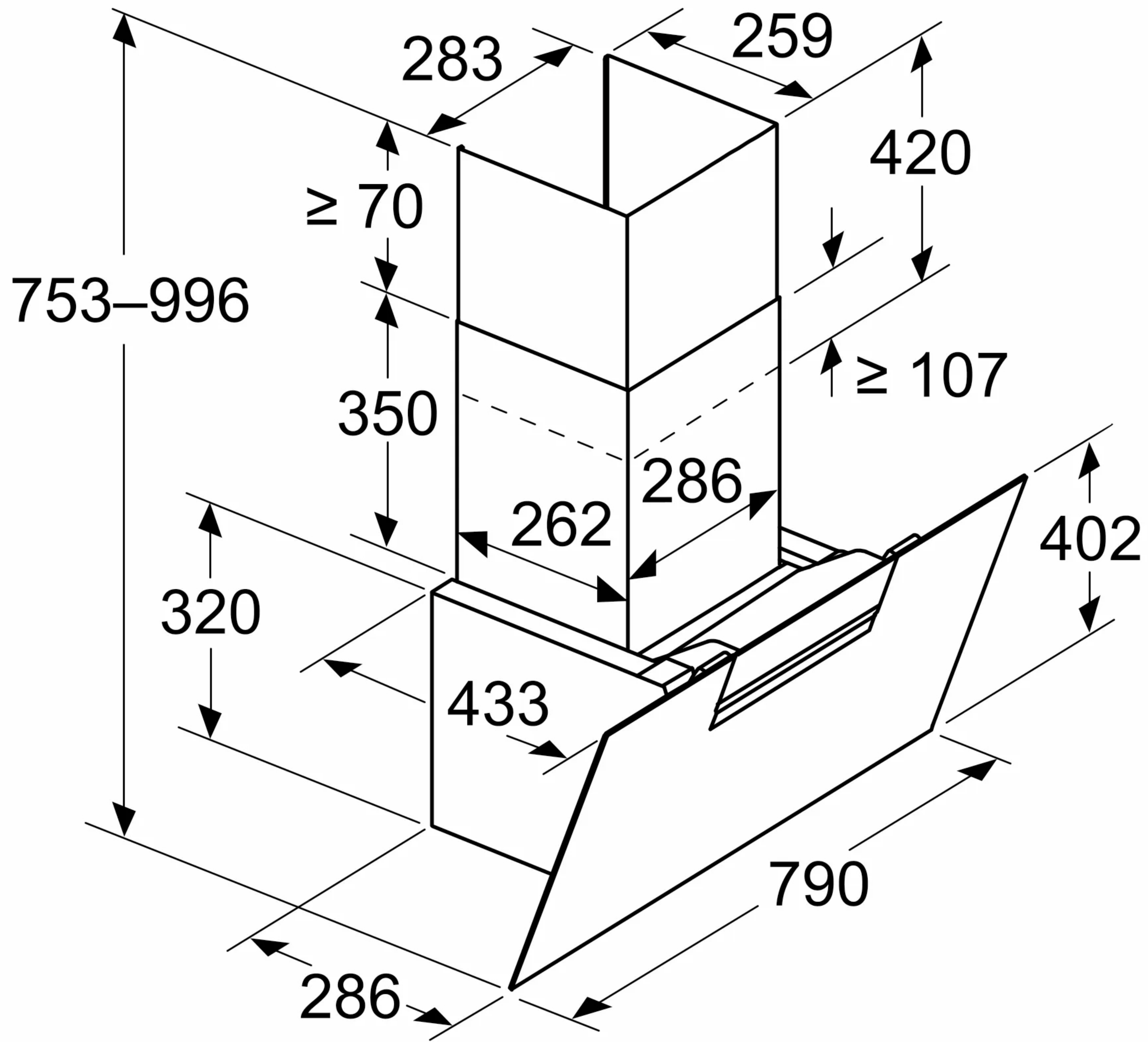


Measurements in mm

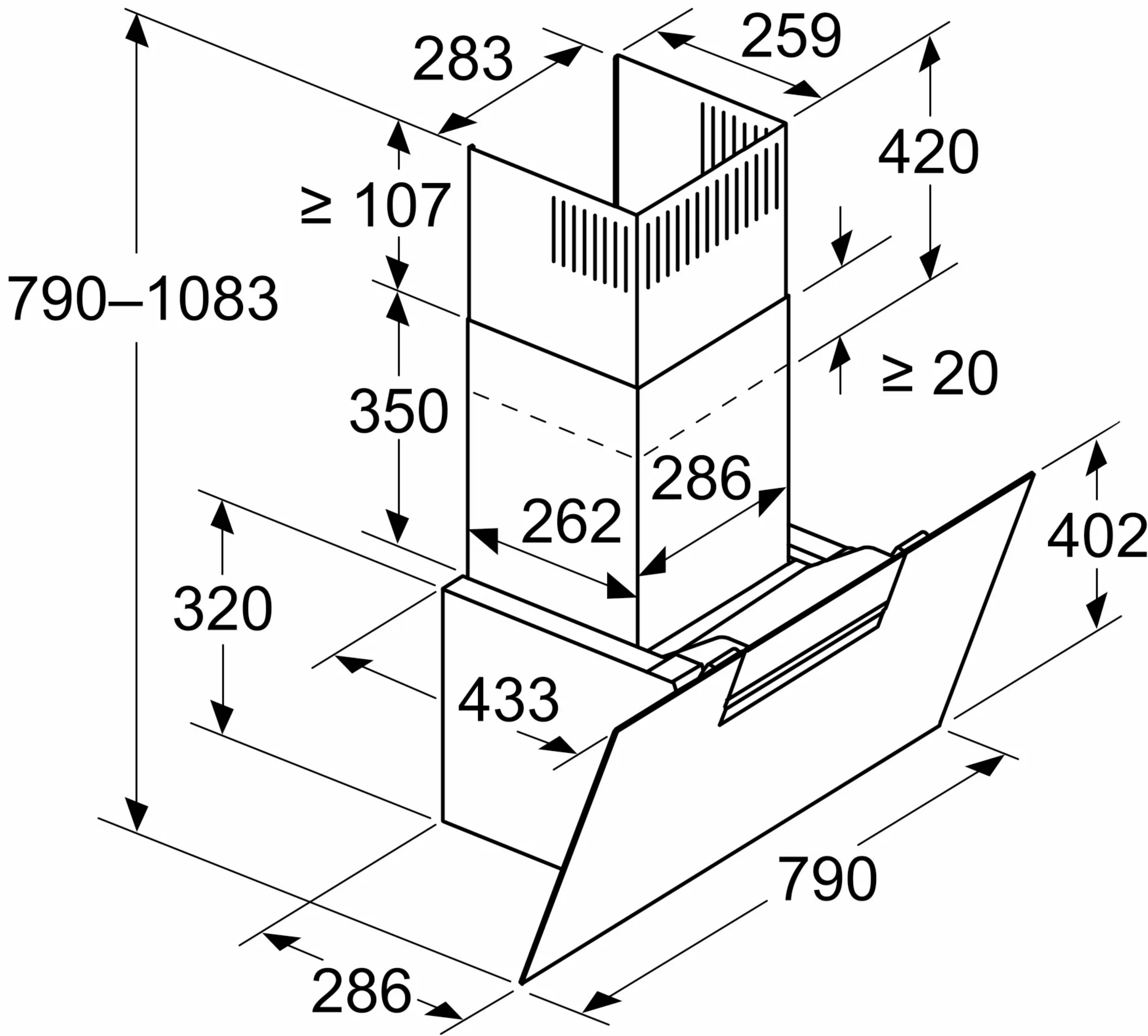
**Appliance in exhaust air mode**





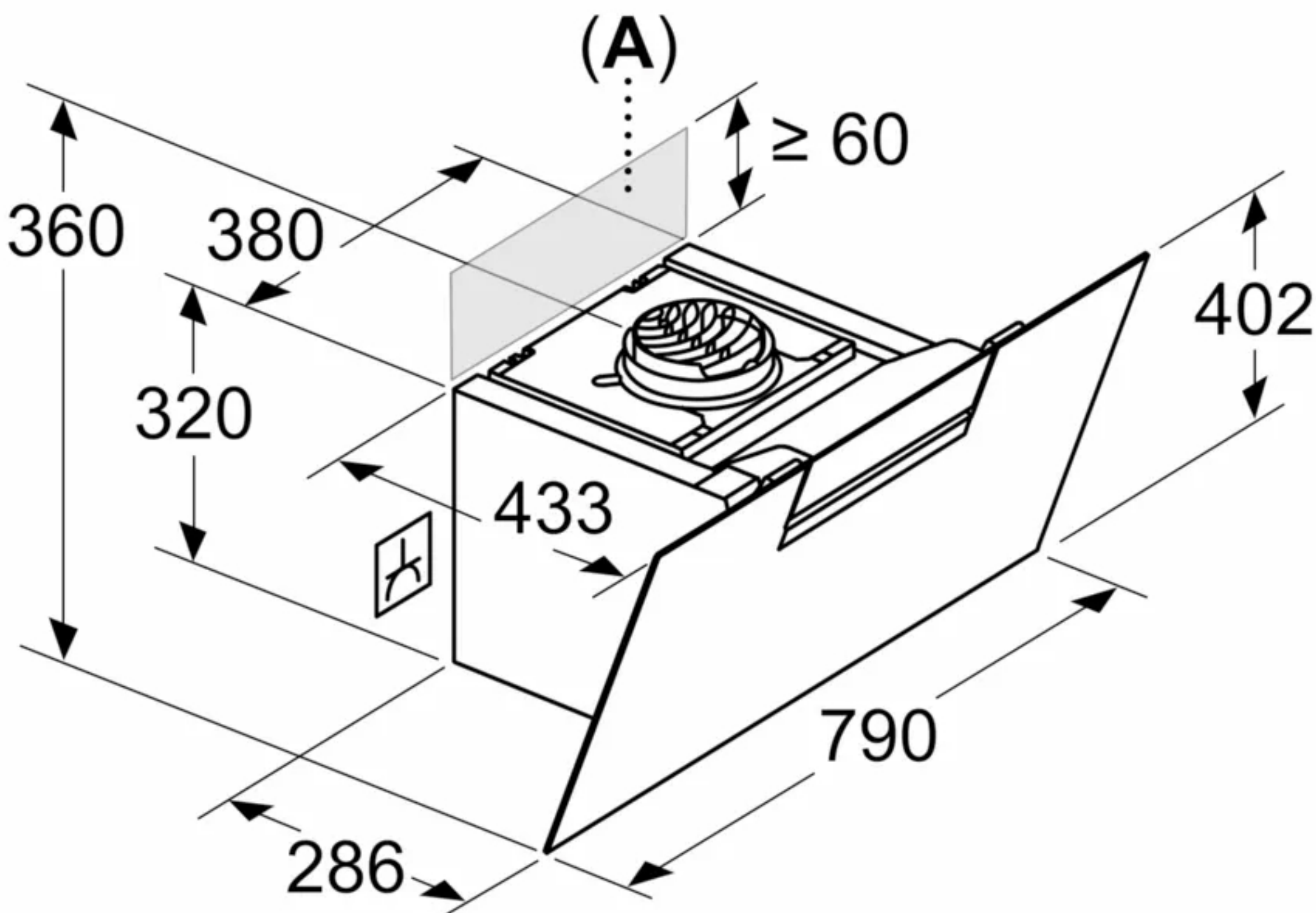
Measurements in mm

**Appliance in circulated air mode**



Measurements in mm

**Appliance in circulated air mode without duct**

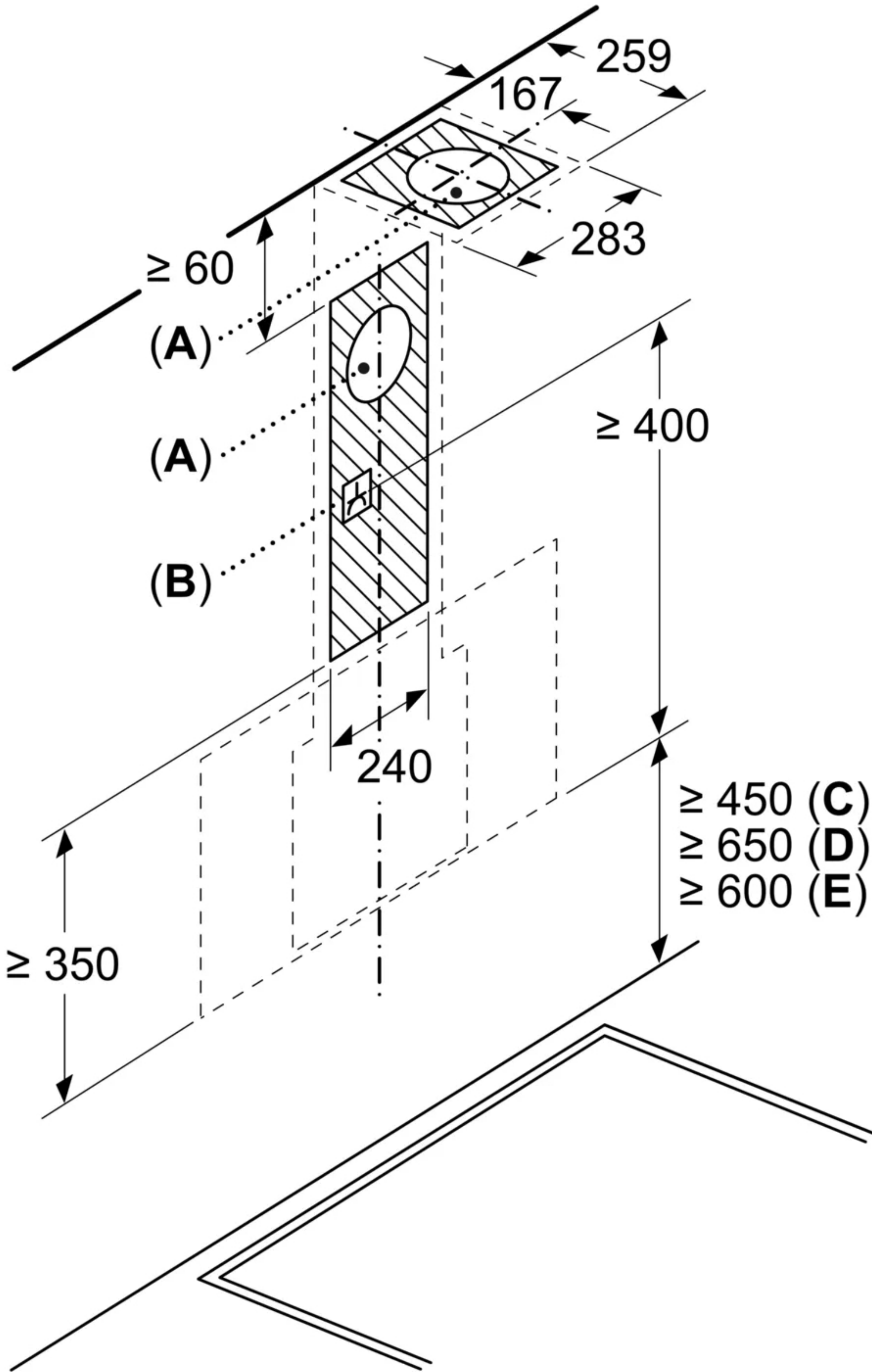


Socket can be fitted to the side of or above the appliance

**A:** Socket only outside the marked area

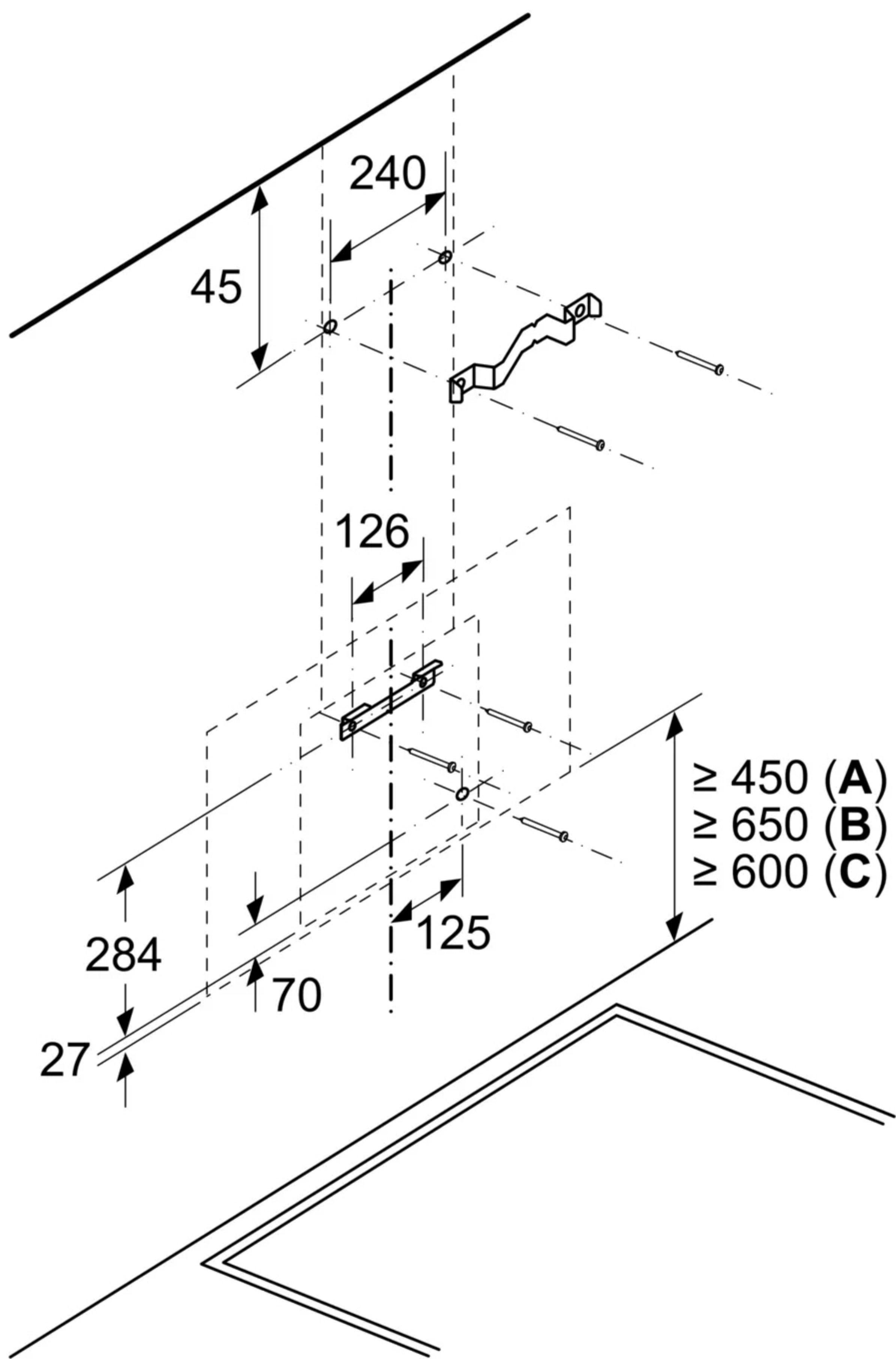


Measurements in mm



- A:** Exhaust-air outlet
- B:** Socket
- C:** Electric
- D:** Gas - from upper edge of pan support
- E:** Electric - for Australia and New Zealand

Measurements in mm  
**Wall installation with chimney**

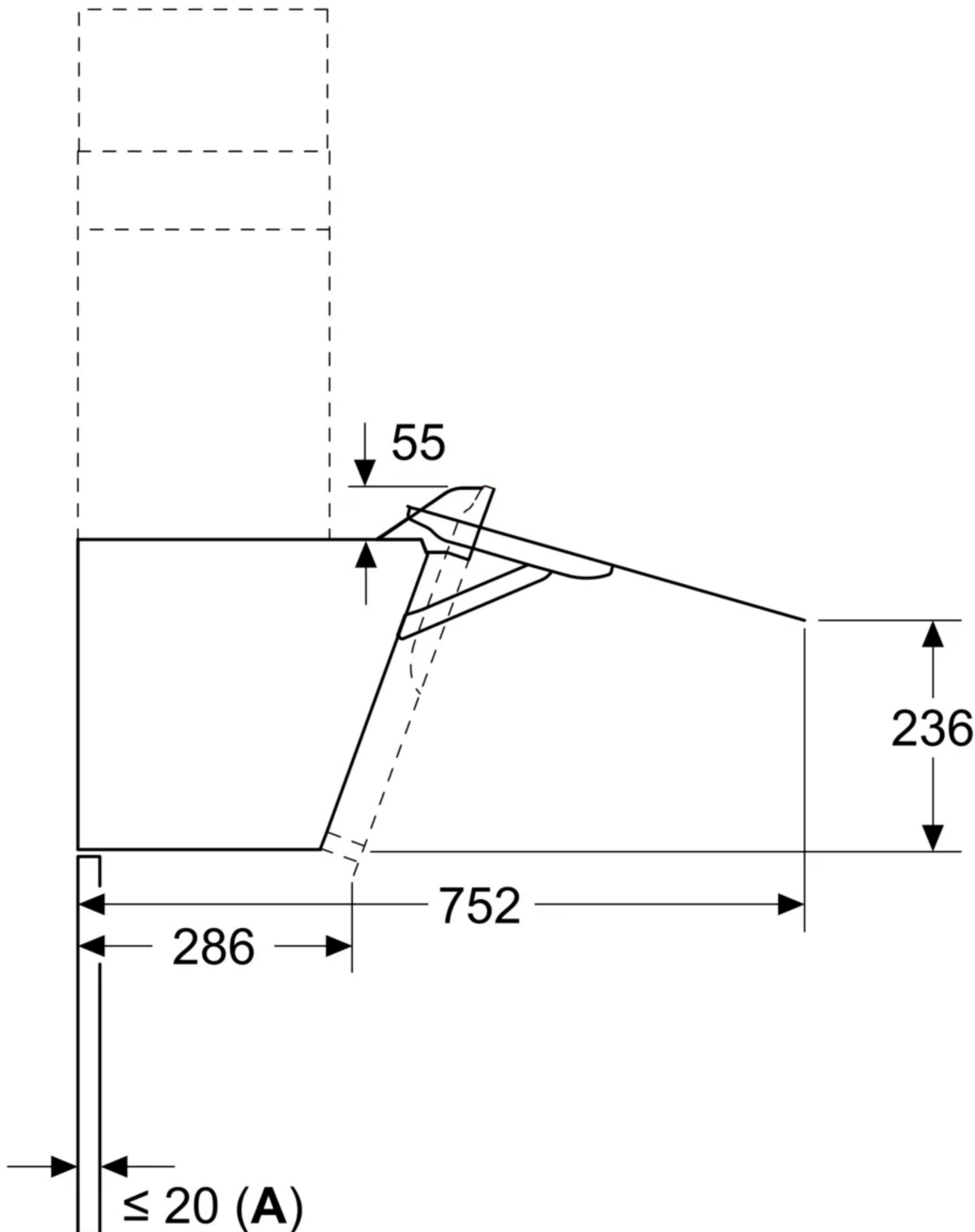


**A:** Electric

**B:** Gas - from upper edge of pan support

**C:** Electric - for Australia and New Zealand

Measurements in mm



**A:** Max. back wall thickness